

Shown: VST-1401D, VSS-2210D



VSS, VST-series

Solenoid and air piloted directional control valves. Poppet design for zero leakage promote system efficiency. Increases the life of your workholding pump by decreasing internal valve leakage.

Application

Advance and retract for single- and double-acting cylinders. The valves require check valves for positive load holding and can be installed for the same independent operation with single-acting cylinders by blocking the B port.

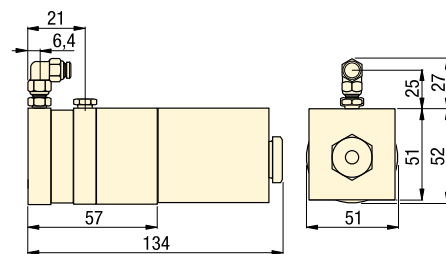
■ VSS-2210D mounted directly on a Turbo II air pump for use on positive clamping fixture.



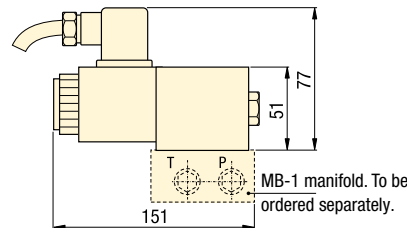
Zero leakage poppet valves increase efficiency

- Poppet valve design for zero leakage
- 4-way, 2-position float offset or normally open
- D03 or CETOP 3 mounting pattern
- DIN-standard rectifier plugs for easy connection to power source
- Air operated models eliminate need for electricity
- Including O-rings and mounting bolts
- SAE manifold ports simplify plumbing
- Inline check valve provides positive load holding

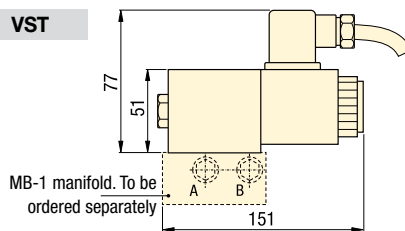
VAS, VAT



VSS



VST

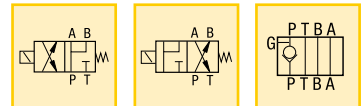


Pressure: 0 - 350 bar

Flow: 11 l/min max.

Voltage: 115 VAC, 24 VDC

- Ⓔ Electroválvulas
- Ⓕ Electro distributeurs
- Ⓖ Elektromagnetische Ventile



Options

D03 Manifolds MB-series

144 ▶



Fittings

194 ▶

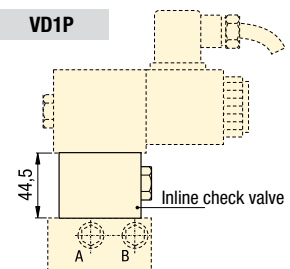


Important

For multiple circuit applications, the VD1P inline check valve is recommended to prevent pressure drop on the holding circuit.

Order bolt kit BKD-71 to mount VD1P with VAS/VSS/VST valves.

VD1P



Product selection

Valve flow path	Solenoid voltage @ current at 50/60 Hz	Model number	Hydr. symbol	Pressure range bar	Pressure drop ¹⁾ bar	Max. oil flow l/min
▼ Solenoid poppet valves – Normally open						
4-way, 2 position	4,1 - 6,8 bar	VAS-0710D		0-350	12	11,3
4-way, 2 position	24VDC @ 1,6 A	VSS-1410D		0-350	12	11,3
4-way, 2 position	115VAC @ 0,4 A	VSS-2210D		0-350	12	11,3
▼ Solenoid poppet valves – Normally closed						
4-way, 2 position	42-70 bar max.	VAT-0710D		0-350	12	11,3
4-way, 2 position	24VDC @ 1,6 A	VST-1410D		0-350	12	11,3
4-way, 2 position	115VAC @ 0,4 A	VST-2210D		0-350	12	11,3
▼ Inline check valve						
-	-	VD1P		0-350	0	11,3

¹⁾ Pressure drop from P-A or P-B at maximum oil flow of 11 l/min.